



Year 11 Parent Collaboration Evening

Thursday, 18th September 2025



Together we belong, develop character and achieve excellence



Some changes to our vision and values...
We want to be...

*'A school in the community, for the
community'*



Proposed Vision

Together we belong, develop character and achieve excellence

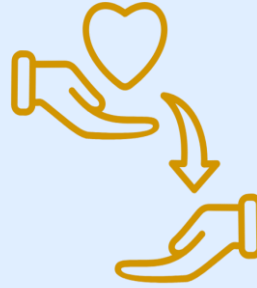


Together we belong, develop character and achieve excellence



Proposed Values

Kindness



Resilience



Responsibility



Please get in touch if you have any feedback on this

Together we belong, develop character and achieve excellence



Purpose of tonight...

Find out more information about key aspects of Y11, including...

- **Structure of Y11** and some of the changes
- **Key dates** for the year
- **Enhancement sessions**
- How we operate the **summer exam season** to maximise support for Y11
- **Rewards** and key **events**
- Input from **MindMate**
- **Sixth Form**

Together we belong, develop character and achieve excellence



The Year Ahead

121 school days left
until the start of
exams

Date	Year 11
Thursday 6 th November – 4pm-7pm	Sixth Form Open Evening
Thursday 13 th November – 4:30pm-7:30pm	Year 11 Parents' Evening
Monday 12 th – Friday 23 rd January	Y11 Mock Examinations
Thursday 12 th February – 4:30pm-7:30pm	Year 11 Parents' Evening
Wednesday 6 th May – Wednesday 17 th June	GCSE Examinations Period (students in school)

Together we belong, develop character and achieve excellence



Morning Meetings

Morning meetings provide regular enhancement and revision sessions for Year 11 students, in **Maths, English and Science**. We take the opportunity to:

- Share year group notices and uniform/equipment checks take place during these sessions. Miss Dobby, Miss Galvin and Mr Hackshaw are in attendance every day to support **pastoral welfare**.
- Share student **successes** and **rewards**.
- Give students **personalised support** with their studies.

Together we belong, develop character and achieve excellence



School Day

Year 11	
08:25-09:05	Morning Meeting
09:05-09:55	Lesson 1
09:55-10:10	Break
10:10 - 11:00	Lesson 2
11:00-11:50	Lesson 3
11:50-12:40	Lesson 4
12:40-1:30	Lunch
1:30-2:20	Lesson 5
2:20-3:10	Lesson 6
3.10 – 4.00	<i>Enhancement sessions</i>

Together we belong, develop character and achieve excellence

Year 11 Enhancement sessions

Monday			
Subject	Time (Lunch or After school)	Teacher (Code)	Room
Performing Arts	After School	NHA/STV	IT01
Product Design	After School	ASU	RM02
Art	Lunch	LBU	AR12
Health & Social Care	After school	LCR	S003
Food Prep	Lunch	LLI	IT01
Business	Lunch	DFO	211
Further Maths	After school	JWH	118

Tuesday			
Subject	Time (Lunch or After school)	Teacher (Code)	Room
Computer Science	Lunch	SEL	IT13
Product Design	Lunch	ASU	RM02
Textiles	After school	KSP	TX01
Art	Lunch	LBU	AR12
History	Lunch	SKH/KTH	201
History	After school	NP/AH	206
Food Prep	Lunch	LLI	IT01
Art	After School	LBU	AR12

Together we belong, develop character and achieve excellence

Year 11 Enhancement Sessions

Wednesday			
Subject	Time (Lunch or After school)	Teacher (Code)	Room
Computer Science	Lunch	SEL	IT13
BTEC IT	After school	SSH	IT12
Art	Lunch	LBU	AR12
Health and Social Care	Lunch and after	LBL	S003
Chemistry	Lunch	LMI/AEN/JS	CH23
Business	After school (From 24/09)	CEL	s005 (sixth form!)
Art	After School	LBU	AR12
Further Maths catch	lunch	JWH	118

Thursday			
Subject	Time (Lunch or After school)	Teacher (Code)	Room
Maths	Afterschool	LAN	
Music	Lunch	AWO	Mu002
BTEC IT	After school	SSH	IT12
Photography	Lunch	LBU	PT01
Photography	After school	LBU	PT01
PE	Lunch	GCH	
Sport	LUNCH	DWH	IT109

Friday			
Subject	Time (Lunch or After school)	Teacher (Code)	Room
Art	Lunch	LBU	AR12
Sport	LUNCH	DWH	IT109
Product Design	Lunch	TLO	RM03

Together we belong, develop character and achieve excellence



Year 11 Enhancement Sessions

We will be tweaking the programme to **guide students** to specific subjects at key times, as well as offering students the **flexibility** to choose the subjects they feel they need the most support with.

Further detail will be published in due course.

It is vital that Year 11 students understand that all **timetabled lessons are the number 1 priority**. **Attendance** and **engagement** at school every day is the best way to secure target grades.


Enhancement sessions are not designed to teach students new content, but to help with **knowledge retention**, **coping with exam pressures**, and to offer students the chance to **practise** their skills.



Together we belong, develop character and achieve excellence

Key Revision Resources

The image is a screenshot of the Benton Park School website. The browser's address bar shows the URL <https://bentonpark.org.uk/main-school/>. The website header features the school's crest and name, "BENTON PARK SCHOOL". Below the header, there is a large banner with the text "Our school vision is CREATING A CLIMATE FOR GREAT LEARNING, SUCCESS AND OPPORTUNITY." To the right of the banner is a dark blue sidebar menu. Three blue arrows with yellow outlines point to specific elements: the first arrow points to the "Menu" link in the top right corner; the second arrow points to the "Students" section in the sidebar; the third arrow points to the "Exams, Revision Tips & Resources" link within the "Students" section. A small white arrow points down from the bottom of the "Students" section.

← ↻ 🏠 🔒 <https://bentonpark.org.uk/main-school/> 🔊 ☆ 📄 ☆ 📁 📌 ...

 **BENTON PARK SCHOOL**

  Our school vision is

**CREATING A CLIMATE FOR
GREAT LEARNING, SUCCESS
AND OPPORTUNITY.**

Open the menu

Select Students

Click here!

🔍 Menu ✕

+ **Our School**

– **Students**

- Attendance
- Duke of Edinburgh Award
- Extracurricular Activities
- Homework
- Exams, Revision Tips & Resources
- School Day & Knowledge Organiser

Key Revision Resources



Student Support

School Transport

At the bottom of the page you will find links to previous school presentations.



Menu

Scroll down to Year 11

Year 11



Year 11 Subject Resources



Year Subject Revision Tips



Computer Science



Business



Drama



Languages



Select subject revision tips

Select a subject

You'll find a bespoke revision tips video for each subject here, made by our teachers.



Rewards

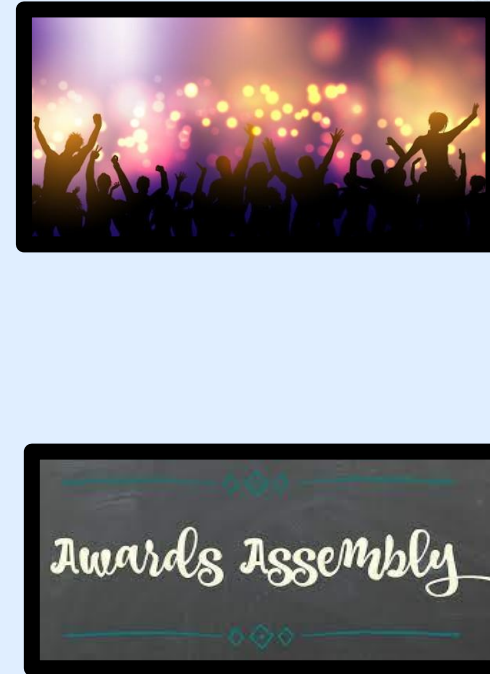
Daily



Weekly



Longer term



Sharing

- Plasma Screens
- Morning Meetings
- Contact home

Together we belong, develop character and achieve excellence

Celebration Events

- Termly – Doing the right thing every day and doing your best.
 - In-school
 - Off-site
- Post exams Celebrations
- The sprint
- Prom – excellent attendance, behaviour, engagement – this is a reward, therefore school will pay **as long as expectations are met.**





Pastoral Care and Support

- Pastoral staff in zones every period
- Adults available to provide support during break and lunchtime
- Hub support
- Safeguarding Team
- Mental Health First Aid Team & MindMate
- Year 11 team – Miss Dobby, Miss Galvin, Mr Hackshaw
- External support

Together we belong, develop character and achieve excellence



Communication

- Arbor
- Parent Newsletter
- Parent Bulletin
- E-mail: year11@bentonpark.mlt.co.uk
- Please make appointments to see people to ensure they are available.
- Please give 2 working days to allow us to respond to all correspondence.

Together we belong, develop character and achieve excellence



MindMate

Together we belong, develop character and achieve excellence



we belong, develop character and achieve excellence



An Introduction to the MindMate Support Team

Elen Roberts - Benton Park Practitioner

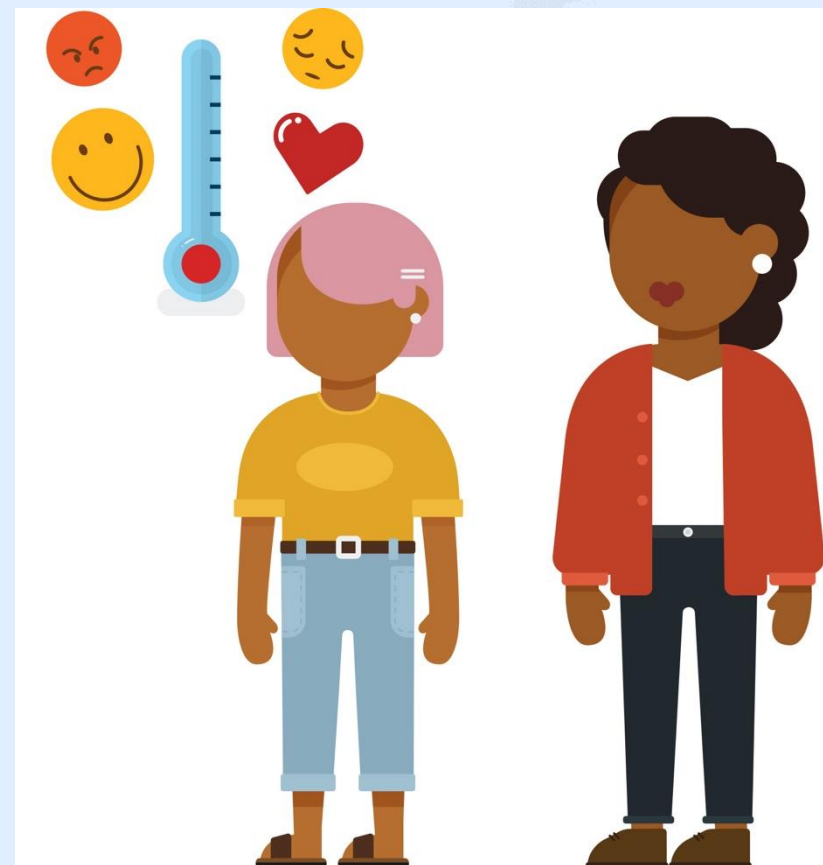
Lauren Thomas – Aireborough EMHP



Together we belong, develop character and achieve excellence

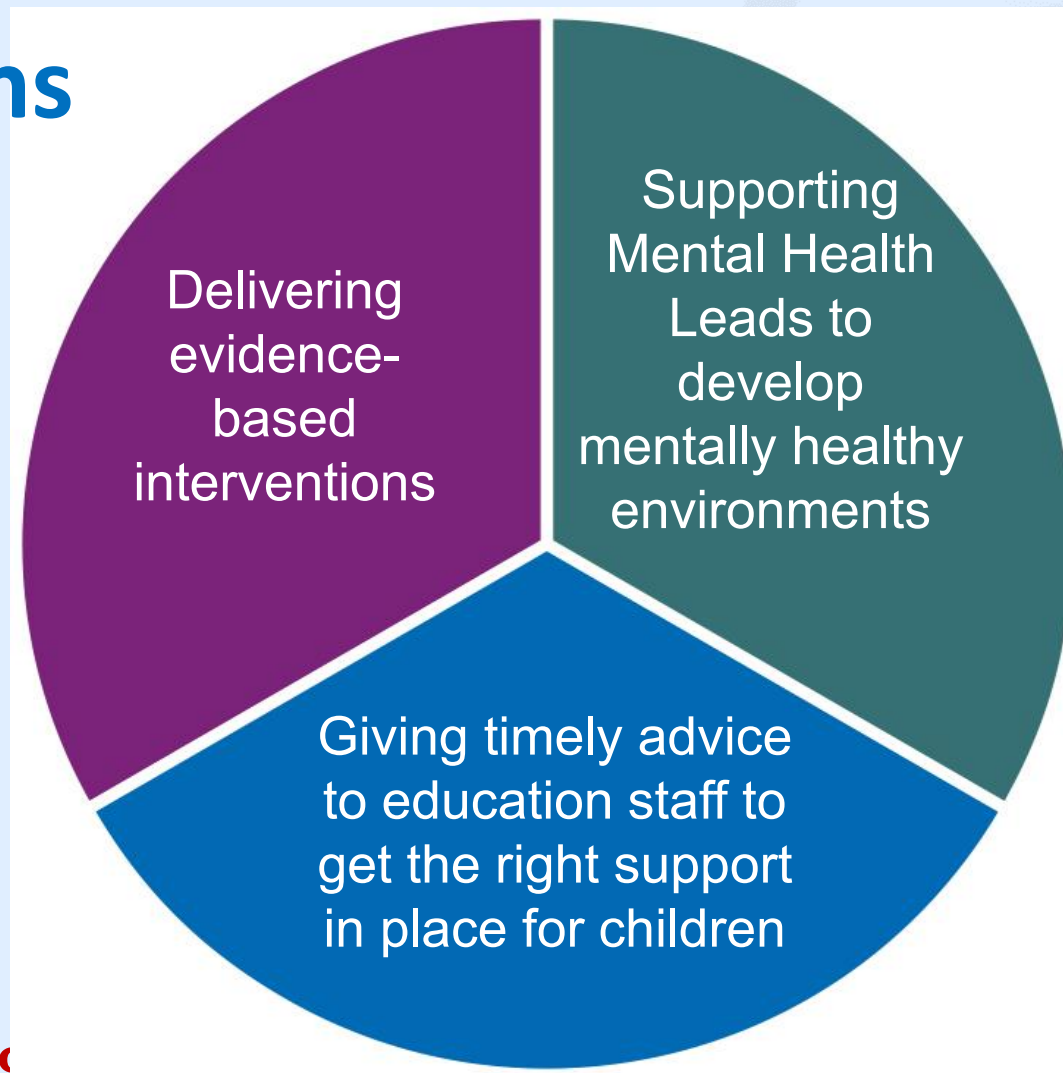
Our aim is to improve access to emotional wellbeing support for children and young people.

We collaborate with schools to promote positive mental health and wellbeing across the **entire school community.**



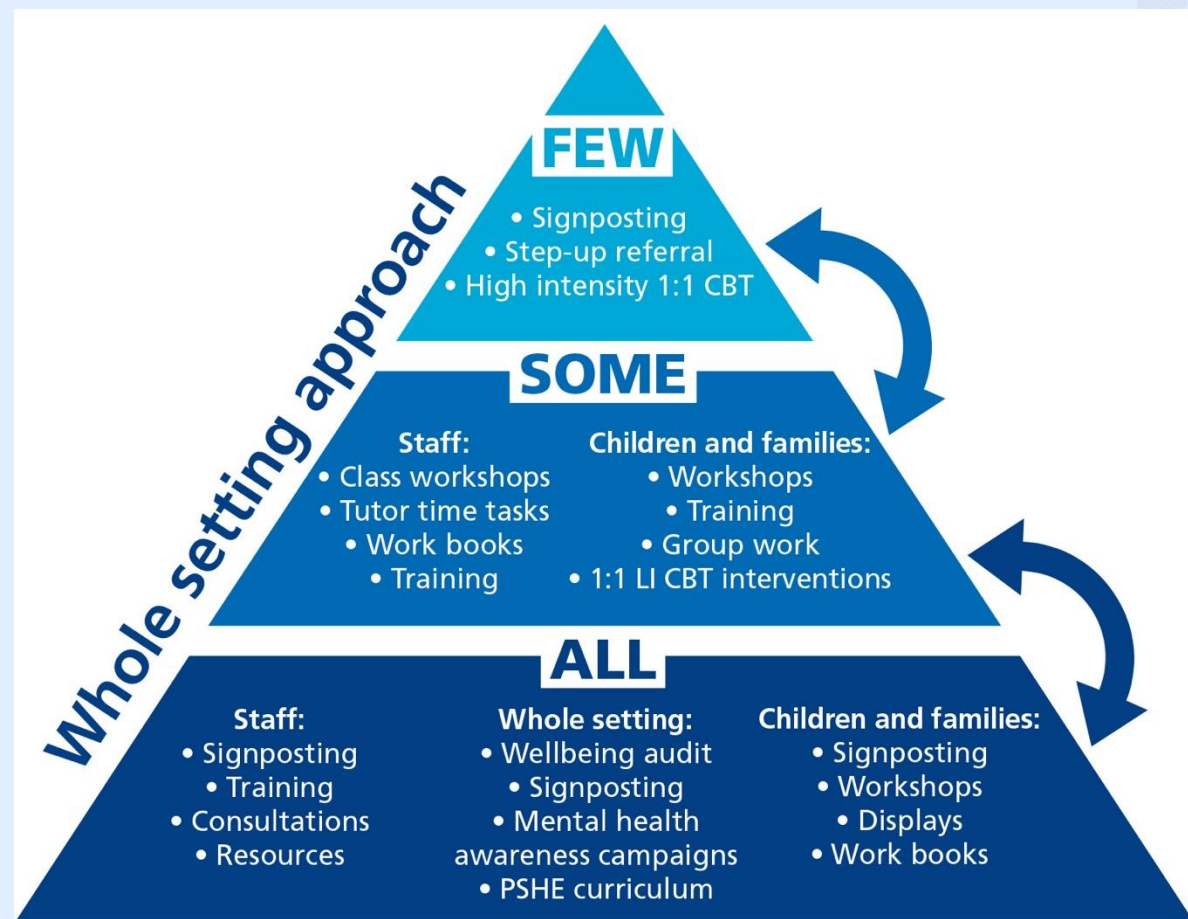
Together we belong, develop character and achieve excellence

3 core functions



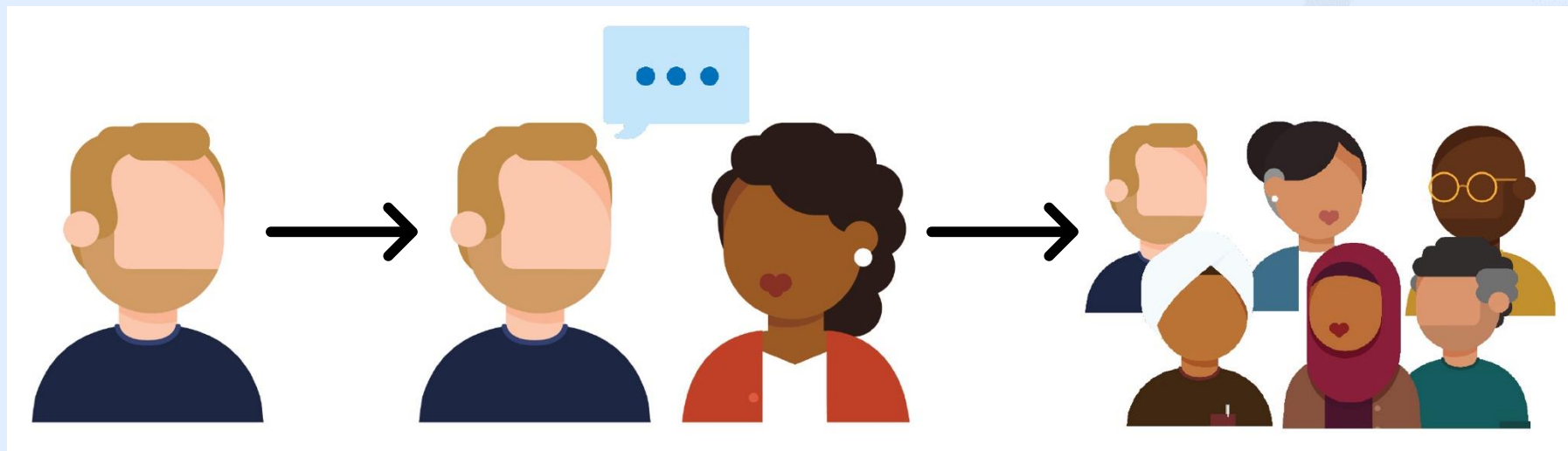
Together we belong, develop

What does this look like?



Together

ence



Staff member requests support for a single young person, group, class or year group.

Consultation between mental health practitioner and education staff member

Results in:

- Assemblies
- Workshops
- Groups
- Staff training
- 1 to 1 therapeutic interventions

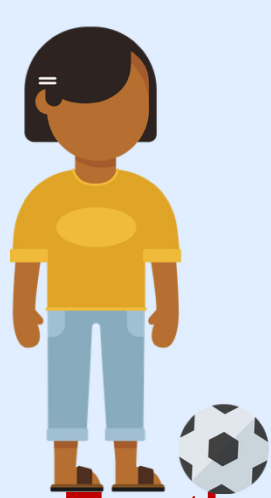
Together we belong, develop character and achieve excellence

Education Mental Health Practitioner

- A new accredited role with professional registration.
- Trained in low-intensity CBT.
- Trained to support schools in their approach to mental health and wellbeing.



Together we belong, develop character and achieve excellence



Together we belong, develop character and achieve excellence



Mr Marsh & Miss Swales

Assistant Headteacher

Sixth Form

Together we belong, develop character and achieve excellence



Benton Park School Sixth Form



Together we belong, develop character and achieve excellence



Benton Park Sixth Form

- Over 32 different subjects to choose from.
- Separate Sixth Form Building with café, study rooms and common room.
- Proven track record of high achievement at A Level
- High number of Oxbridge, medicine, Russell Group and competitive higher level and degree apprenticeships.

Together we belong, develop character and achieve excellence



The Right Course For You

- Art & Design
- Biology
- Business Studies
- Chemistry
- Computer Science
- Core Maths
- Creative Media
- Criminology
- Drama
- Economics
- English Language
- English Literature
- French
- Further Maths
- Geography
- German
- Health and Social Care
- History
- ICT
- Maths
- Media Studies
- Music
- PE
- Photography
- Performing Arts
- Physics
- Politics
- Product Design
- Psychology
- Religious Studies
- Sociology
- Spanish
- Sport and Physical Activity

Together we belong, develop character and achieve excellence



Sixth Form Experience

- **Personalised One-to-One Tutor Support**
Regular guidance to help students stay on track academically and personally.
- **Enrichment Opportunities**
Activities designed to build CVs and develop valuable life and career skills beyond the classroom.
- **Educational Trips**
Inspiring visits that broaden horizons and support subject learning.
- **Dedicated Study Spaces**
Quiet, focused environments for independent learning and revision.
- **Greater Freedom & Independence**
A more mature learning environment that prepares students for life after school.
- **Strong Pastoral Care**
Supportive staff who prioritise student wellbeing and personal development.
- **Smaller Class Sizes**
More individual attention and tailored teaching to support progress.

Together we belong, develop character and achieve excellence



Next Steps

- Applications open Monday 22nd September
- **Open Evening Thursday 6th November 6-8pm**
- 1-to-1 Interviews Sixth Form Interviews before Christmas.
- Every student Careers Meeting Mrs Koffi



Together we belong, develop character and achieve excellence



Sixth Form Open Evening

Thursday 6th
November 6-8pm



Together we belong, develop character and achieve excellence



Thank you for joining us!

There is now an opportunity to speak to heads of subject in the dining hall area – *this is optional*.

You are free to leave if you do not wish to speak to our subject staff.



Together we belong, develop character and achieve excellence