



# **Year 9 Parent Information Evening**

**Thursday 25th September 2025**

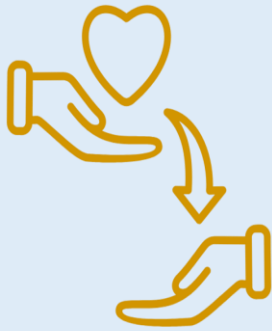
# Proposed Vision

Together we belong, develop character and achieve excellence



# Proposed Values

Kindness



Resilience



Responsibility



All Benton Park students follow three simple expectations:

- Work hard
- Be kind and respectful
- Follow staff instructions first time

To drive students' success, we actively encourage all learners to adopt the Benton Park Values

***We are kind***

***We are resilient***

***We are responsible***

***We are Benton Park***

# The Start of Year 9

We have focused on:

- High expectations
- Our proposed School Values
- Induction sessions
- Attendance
- Rewarding outstanding effort, achievement and progress
- Home learning

# Who can I get support from?

## Year Leaders



**Miss Downing**  
Year 7



**Miss Bannister**  
Year 8



**Miss Charlton**  
Year 9



**Miss Wester**  
Year 10

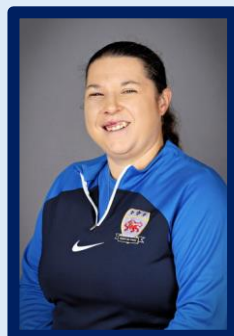


**Miss Galvin**  
Year 11

**You can also speak to your  
check-in tutor, all of your subject  
teachers, your PD teacher and all  
of your pastoral staff:  
Miss Leonard, Miss Howe, Mr  
Sykes, Mrs Sykes,**



**Mrs Collins**  
Key Stage 3 Leader



**Miss Dobby**  
Key Stage 4 Leader



**Mrs Howard**  
Designated Safeguarding  
Lead (DSL)



**Miss Tyldsley**  
SENDCo

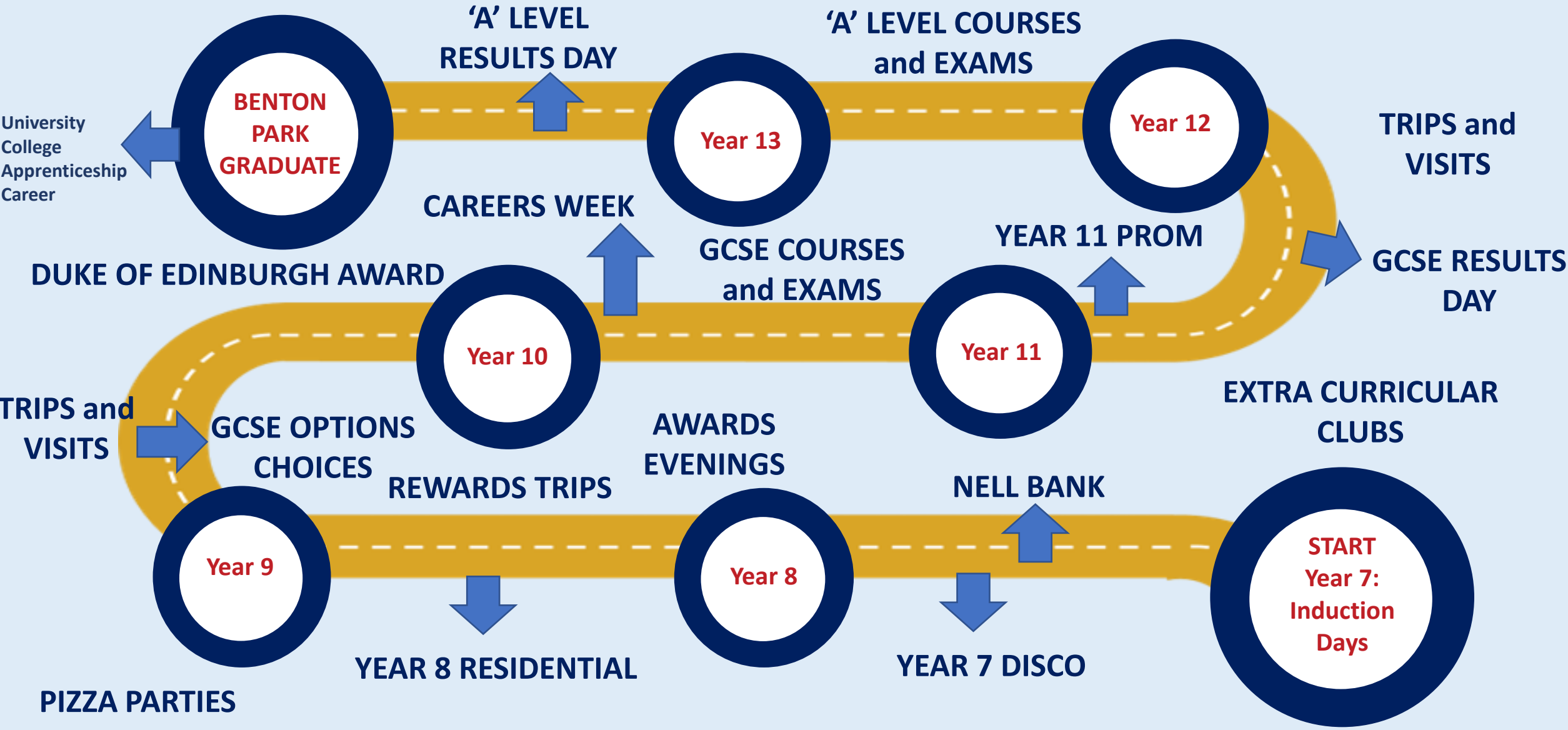
## SLT Links

Year 7 – Mr Coltman  
Year 8 – Mr Bownass  
Year 9 – Miss Smith & Mrs Howard  
Year 10 – Miss Taylor  
Year 11 – Mr Hackshaw

# Pastoral Care and Support

- Pastoral staff, teaching staff and support staff available during Morning Meetings
- Pastoral staff in zones every period
- Adults available to provide support during social time and transitions. There are a number of staff on hand every break and lunchtime
- Hub support
- Safeguarding team

# The 7 year Benton Park learning journey





# The Year Ahead

Date	Year 9
30 <sup>th</sup> Sept-1 <sup>st</sup> October	Malham trips
3 <sup>rd</sup> November	Knowledge Testing
12 <sup>th</sup> January – 26 <sup>th</sup> January	Assessment Window 1
26 <sup>th</sup> January	Reports
5 <sup>th</sup> February	Parents Evening
27 <sup>th</sup> April- 1 <sup>st</sup> May	Knowledge Testing
12 <sup>th</sup> March	Options Evening
22 <sup>nd</sup> June- 3 <sup>rd</sup> July	Assessment Window 2

# Why is this such an important year for Year 9?



Making the right choices

Considering abilities and skills

Looking to the future

Supported guidance

# How students will make their choices



- Finding out more about the subjects they are interested in
- Talking to their teachers
- Attending Parents and Options Evenings
- Discussing choices at home with parents and carers
- Attending guidance meetings with leaders at school and having honest conversations

# Morning Meetings Tues-Thurs

- The Morning Meeting is a fantastic opportunity for students to practice retrieval of key knowledge to ensure it is retained in the **long-term memory**.
- Knowledge retention requires regularity, and our daily **low-stakes quizzing** allows students to self-assess what they know/can do.
- In Morning Meetings, students also complete **Maths questions** and share reading experiences through the Benton Park **Big Read**.
- Year groups notices and uniform/equipment checks take place during these sessions. The Year group leader is in attendance every day to support **pastoral welfare**.

# The Benton Park Big Read: yr9

## Our School Values in this novel:



- **Collaboration** between Kaspar and those he never expected to collaborate with;
- **Resilience** to continue pushing for the truth and overcoming grief and loss;
- **Compassion** towards everyone, as we may not know the full story behind a person's actions or choices;
- **Endeavour** in Kaspar's determination to seek justice and find the truth about the world he lives in;
- **Inspiration** in questioning the established if you see injustice and not being afraid to defend what you believe is right and fair.

# Check ins Monday and Friday

- Students have a check in tutor, who they will meet two mornings a week for a check in/ check out session
- These sessions will be important opportunities for students to develop a closer working relationship with an identified member of staff, who they can seek out for support if needed.
- Monday check ins review the week ahead, support students following the weekend and look at key data like rewards and attendance.
- Friday check outs review the week so far, extra curricular opportunities, well being and a discussion based 'news of the week' activity.
- Tutors assist with any equipment, uniform or organisational issues so students are set up and ready for the day.
- Students are able to approach tutors with anything they need support with either academic or pastoral.
- Tutors can triangulate communication between school and home.

# PLANNING



## The Benton Park Fundamentals for Building Inclusive Classrooms



### Regularly update strategic seating plans

These may include barriers to learning but must focus on strategies to support vulnerable learners. They should be used by teachers as part of classroom delivery to target support where most needed and must be adaptive to student needs.



### Modes of Learning

Attach a learning mode to every activity, explicitly sharing it with the students. Consider which modes will best support vulnerable learners – e.g. opportunities for collaborative talk will support students with literacy needs.



### Light blue decluttered slides, using Calibri font

This is a dyslexia-friendly font, while a blue pastel background will reduce glare and improve readability of print/text. Consider also the size of your font on PowerPoints and worksheets as well as the amount of information that you need to convey.



### Literacy: Reciprocal Reading and Word Revolution

Use the stages of reading which support all learners, especially those identified as Literacy Watch and Literacy Plus: Predict/ Clarify/ Question/ Evaluate. Read aloud to support weaker readers to follow texts. The Word Revolution section of the Quick 6 must be referred to and explained at the start of each lesson, encouraging pre-loading of Tier 2 and 3 vocabulary.



### Chunking Information

Avoid cognitive overload by breaking down longer texts; using dual coding and displaying/sharing clear instructions to students. Share longer texts in manageable units to reduce demands on student working memory and create short term goals.



# DELIVERY



## The Benton Park Fundamentals for Building Inclusive Classrooms



### Meet and Greet

Create a positive start to lessons by welcoming students at the door and directing them to the Quick 6 and Word Revolution. Every lesson is a 'Fresh Start'.



### Signal, Pause, Insist

5-4-3-2-1 with a raised hand to gain silence. Make sure this is enforced, so that there are no distractions in the classroom to prevent learning.



### 'I do, we do, you do'

Activities and tasks are modelled by the expert first, prioritising vulnerable learners in the 'we do' and 'you do' stages to ensure they have the necessary tools to work independently. Deconstruct - Reconstruct activities/ written work so that all students know the success criteria. Use 1:1 check-ins with vulnerable learners when necessary.



### Scaffolding, use of writing frames and sentence starters

Use strategic seating plans to identify which learners will need a higher level of literacy support, ensuring that the work is appropriately pitched so that it is challenging for all.



### Dismiss from the door

Lesson exit - dismiss a row at a time, providing positive reinforcement for the rest of the day. Support transition time by monitoring student movement on the corridor.



# ASSESSMENT



## The Benton Park Fundamentals for Building Inclusive Classrooms



### Quick 6 for Retrieval Practice

Support students to know more and remember more of the powerful knowledge that supports your curriculum. All students must participate and show you what they know, using show-me-boards.



### Show-me-Boards to Check Understanding

Ensure that all learners hold up their boards so that you can identify misconceptions and errors which may need re-teaching. Create AFL opportunities in the classroom for all learners, including drafting of work, to allow easy identification of understanding and mastery.



### Cold-Calling

No hands-up, use 'Pose- Pause- Pounce- Bounce' as a structure. Allow a period of thinking time, before choosing a student to respond. Encourage students to 'Say it Again, Better' and use specialist vocabulary.



### Whole-Class Feedback

Regularly identify class successes, misconceptions or misunderstandings to share with learners. This must inform future delivery and teaching, closing gaps in learning as students respond to the feedback given and adaptive teaching strategies are employed.

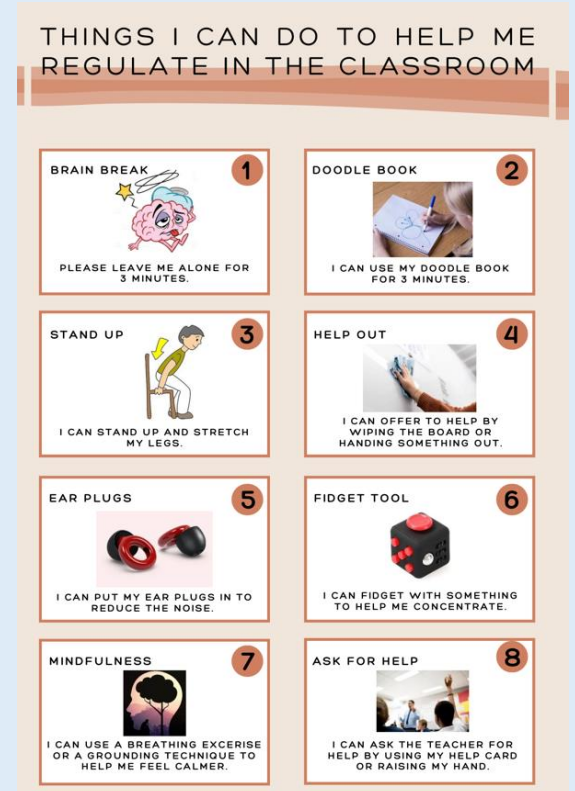


### Live-marking

Responsive marking which allows teachers to adapt lessons and identify common issues quickly. Prioritise vulnerable learners who may need extra prompts, support or scaffolds or who have specific learning needs.



# Inclusion Support



- ✓ Pastoral staff on zones
- ✓ Check in tutors' for pastoral support
- ✓ Visits from your key worker (some will be timetabled)

- ✓ Access to a small group intervention in the Hub

- ✓ Extra support with regulating in the classroom, so students don't miss out on learning

# Sparx & Educake

Login to these systems using your Microsoft 365 account.

- This year, we are moving to online homework.
- We already use **SPARX** for **Maths** and **Science**.
- We are introducing **EDUCAKE** for:
  - English
  - Geography
  - History
  - French / Spanish
  - Computer Science
  - Business (KS4)



# KS3 Homework schedule

Subject	Frequency
English	Weekly
Science	
Maths	
MFL	
Geography	Fortnightly
History	
Computer Science	

# Knowledge Organiser

## *Your most important learning tool*

We have completely reworked our knowledge organisers this year to make them central to your learning in and out of school.

You must have your Knowledge Organiser with you at all times; you will need them for the following...

- Out on your table **in your lessons** – you will need to refer to them to support you with your classroom learning
- Use them at home to **support with home learning**
- Use them as a **revision tool** for assessments
- For use in **cover lessons**



# Knowledge Organiser – this is your most important learning tool



## What have we changed?

- No longer week by week but condensed to feature the **most important content**
- Everything in your knowledge organiser will form, or build toward, your assessments this year, which makes them an **incredibly useful revision tool**
- Your knowledge organisers will **support your home learning**
- We have made more use of **graphical organisation** to help you build connections – reducing the amount of text on a page.

SUBJECT: Science		YEAR: 7																									
TOPIC: Super Scientist and Cells		SEMESTER: I																									
<b>WORD REVOLUTION</b> <table border="1"> <tr> <td><b>Hazard</b></td> <td>What is dangerous about the apparatus or method used</td> </tr> <tr> <td><b>Apparatus</b></td> <td>The equipment you need to use</td> </tr> <tr> <td><b>Average/Mean</b></td> <td>Add the values together and divide by how many values you have.</td> </tr> <tr> <td><b>Independent variable</b></td> <td>What you change in the experiment</td> </tr> <tr> <td><b>Dependent variable</b></td> <td>What you measure in the experiment</td> </tr> <tr> <td><b>Control variable</b></td> <td>What you keep the same in the experiment</td> </tr> <tr> <td><b>Anomalous result</b></td> <td>A result that looks wrong when you compare it to the others/pattern of</td> </tr> <tr> <td><b>Cell membrane</b></td> <td>Allows certain substances to enter and leave the cell</td> </tr> <tr> <td><b>Chloroplast</b></td> <td>Where photosynthesis happens in cells</td> </tr> <tr> <td><b>Photosynthesis</b></td> <td>The process of plants making their own food</td> </tr> <tr> <td><b>Mitochondria</b></td> <td>Where respiration occurs in cells, which releases energy</td> </tr> <tr> <td><b>Ribosomes</b></td> <td>Where proteins are made in cells</td> </tr> </table>		<b>Hazard</b>	What is dangerous about the apparatus or method used	<b>Apparatus</b>	The equipment you need to use	<b>Average/Mean</b>	Add the values together and divide by how many values you have.	<b>Independent variable</b>	What you change in the experiment	<b>Dependent variable</b>	What you measure in the experiment	<b>Control variable</b>	What you keep the same in the experiment	<b>Anomalous result</b>	A result that looks wrong when you compare it to the others/pattern of	<b>Cell membrane</b>	Allows certain substances to enter and leave the cell	<b>Chloroplast</b>	Where photosynthesis happens in cells	<b>Photosynthesis</b>	The process of plants making their own food	<b>Mitochondria</b>	Where respiration occurs in cells, which releases energy	<b>Ribosomes</b>	Where proteins are made in cells	<p>What will I study in this topic?</p> <p>Develop your working scientifically skills by using lab equipment, identifying hazards and variables to conduct basic investigations.</p> <p>What will I be able to do by the end of this topic?</p> <p>By the end of this unit, you will be able to:</p> <ul style="list-style-type: none"> <li>• Identify basic laboratory apparatus</li> <li>• Identify main hazard symbols and state their meanings</li> <li>• Identify hazards in the laboratory</li> <li>• Carry out basic equipment skills</li> <li>• Use a Bunsen burner safely</li> </ul>	
<b>Hazard</b>	What is dangerous about the apparatus or method used																										
<b>Apparatus</b>	The equipment you need to use																										
<b>Average/Mean</b>	Add the values together and divide by how many values you have.																										
<b>Independent variable</b>	What you change in the experiment																										
<b>Dependent variable</b>	What you measure in the experiment																										
<b>Control variable</b>	What you keep the same in the experiment																										
<b>Anomalous result</b>	A result that looks wrong when you compare it to the others/pattern of																										
<b>Cell membrane</b>	Allows certain substances to enter and leave the cell																										
<b>Chloroplast</b>	Where photosynthesis happens in cells																										
<b>Photosynthesis</b>	The process of plants making their own food																										
<b>Mitochondria</b>	Where respiration occurs in cells, which releases energy																										
<b>Ribosomes</b>	Where proteins are made in cells																										
<table border="1"> <tr> <th colspan="2">Common Lab Hazards</th> </tr> <tr> <td></td> <td>Flammable - Sets on fire easily.</td> </tr> <tr> <td></td> <td>Corrosive - Destroys living tissue such as skin and eyes.</td> </tr> <tr> <td></td> <td>Moderate Hazard - Chemicals may be an irritant or harmful</td> </tr> </table> <p>These are the three most common hazards that you will see in the lab. The symbol on the apparatus shows you why it might be dangerous.</p>		Common Lab Hazards			Flammable - Sets on fire easily.		Corrosive - Destroys living tissue such as skin and eyes.		Moderate Hazard - Chemicals may be an irritant or harmful	<table border="1"> <tr> <th colspan="2">Animal and Plant cells</th> </tr> <tr> <td> <p>Animal cell</p> </td> <td> <p>Plant Cell</p> </td> </tr> </table>		Animal and Plant cells		<p>Animal cell</p>	<p>Plant Cell</p>												
Common Lab Hazards																											
	Flammable - Sets on fire easily.																										
	Corrosive - Destroys living tissue such as skin and eyes.																										
	Moderate Hazard - Chemicals may be an irritant or harmful																										
Animal and Plant cells																											
<p>Animal cell</p>	<p>Plant Cell</p>																										
<table border="1"> <tr> <th colspan="3">Specialised cells</th> </tr> <tr> <th>Cell</th> <th>Diagram</th> <th>Adaptations</th> </tr> <tr> <td>Leaf cell</td> <td></td> <td>Lots of chloroplasts.</td> </tr> <tr> <td>Root hair cell</td> <td></td> <td>Large finger like shapes to increase surface area.</td> </tr> <tr> <td>Sperm cell</td> <td></td> <td>Head contains an enzyme to help penetrate egg, lots of mitochondria so egg can swim to sperm.</td> </tr> </table>		Specialised cells			Cell	Diagram	Adaptations	Leaf cell		Lots of chloroplasts.	Root hair cell		Large finger like shapes to increase surface area.	Sperm cell		Head contains an enzyme to help penetrate egg, lots of mitochondria so egg can swim to sperm.	<p>These specialised cells have special features (adaptations) that allow them to do their specific jobs.</p>										
Specialised cells																											
Cell	Diagram	Adaptations																									
Leaf cell		Lots of chloroplasts.																									
Root hair cell		Large finger like shapes to increase surface area.																									
Sperm cell		Head contains an enzyme to help penetrate egg, lots of mitochondria so egg can swim to sperm.																									

# Home Learning

## Home Learning and Revision Practise

For subjects that do not use an online learning platform for home learning, you will receive homework that is based on your Knowledge Organiser.

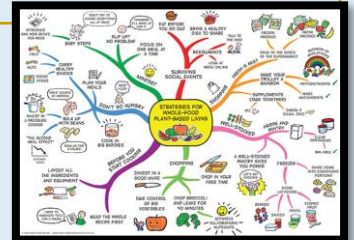
You complete this homework on paper that you **hand in to your subject teachers**.

The purpose of this is to help you **know and remember more content over time**, by developing your memory recall and supporting your revision practise.

### Additional Home Learning and Revision Practise Methods:

- Using the **Word Revolution words** – checking spellings are 100% accurate and that you know the definitions
- Producing a **mind map** or a **spider diagram** with the key learning content
- Making a **storyboard** of **key events** or draw out key images
- Making a **timeline of events**
- Copying out a diagram and **practising labelling** it accurately
- Practising writing out some sentences or phrases in the language you are studying
- **Retrieving and finding information** from what you have read

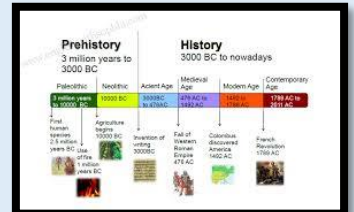
Mind map/spider diagram



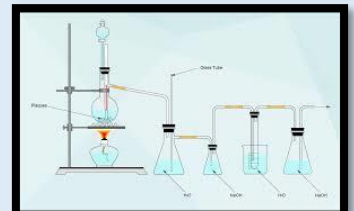
Storyboard



Timeline



Diagram





# Rewards

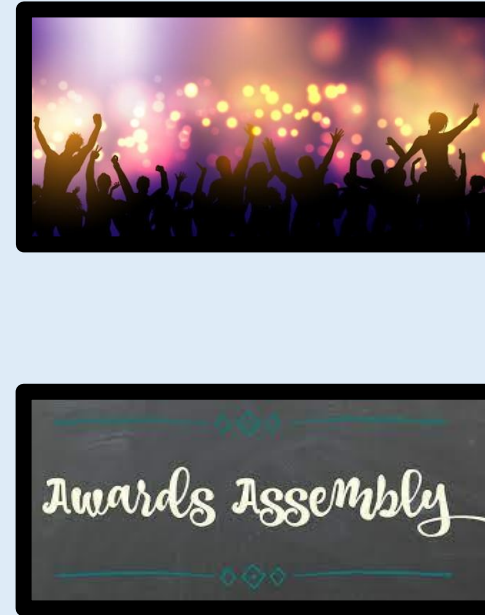
## Daily



## Weekly



## Longer term



## Sharing

- Plasma Screens
- Morning Meetings
- Contact home

➤ ENDEAVOUR ➤ RESILIENCE ➤ INSPIRATION ➤ COLLABORATION ➤ COMPASSION



## Daily Rewards

- **Value Stamps**- These can be earned in and outside of the classroom.
- **Golden Tickets**- Every Lesson.
- **Home Learning**- Earn stamps by the quality of your home learning.
- **Extra-Curricular**- Join a club and earn stamps.
- **Phone calls/emails home**- Impress staff and earn these.

## Weekly Rewards

- **Highest Values prize** - The student with the highest number of stamps for each value each week will earn a prize.

# Termly Rewards and Experiences

- A **reward assembly** takes place during the last week of each term.

Students will be recognised and celebrated within the assembly for a range of achievements.

- **Subject Recognition-** Excellence and Progress
- **Top Values**
- **Pastoral Leader Award**
- Certificates and Chocolate for each of the winners.

# Stamps = Prizes

Every milestone = 1 ticket  
into prize draw

1000 stamps	Bronze	Sweet treat
1500 stamps	Silver	6th form café voucher
2000 stamps	Gold	Free time Afternoon
3000 stamps	Platinum	£20 voucher
4000 stamps	Diamond	Chance to win £100 voucher

# Communication

- E-mail: [Year9@bentonpark.mlt.co.uk](mailto:Year9@bentonpark.mlt.co.uk)
- Parent Bulletin
- Arbor
- Please make appointments to see people to ensure they are available.
- Please give 2 working days to allow us to respond to all correspondence.

# Follow up support

- Check in tutors are available should you now wish to speak with them in the dining room
- There is also further support available in the main hall from the team at Educake if you would like to ask any questions, and also our IT team if you are struggling to log in.
- Any SEND queries – please go to Activity studio 2 or email [hub@bentonpark.mlt.co.uk](mailto:hub@bentonpark.mlt.co.uk)