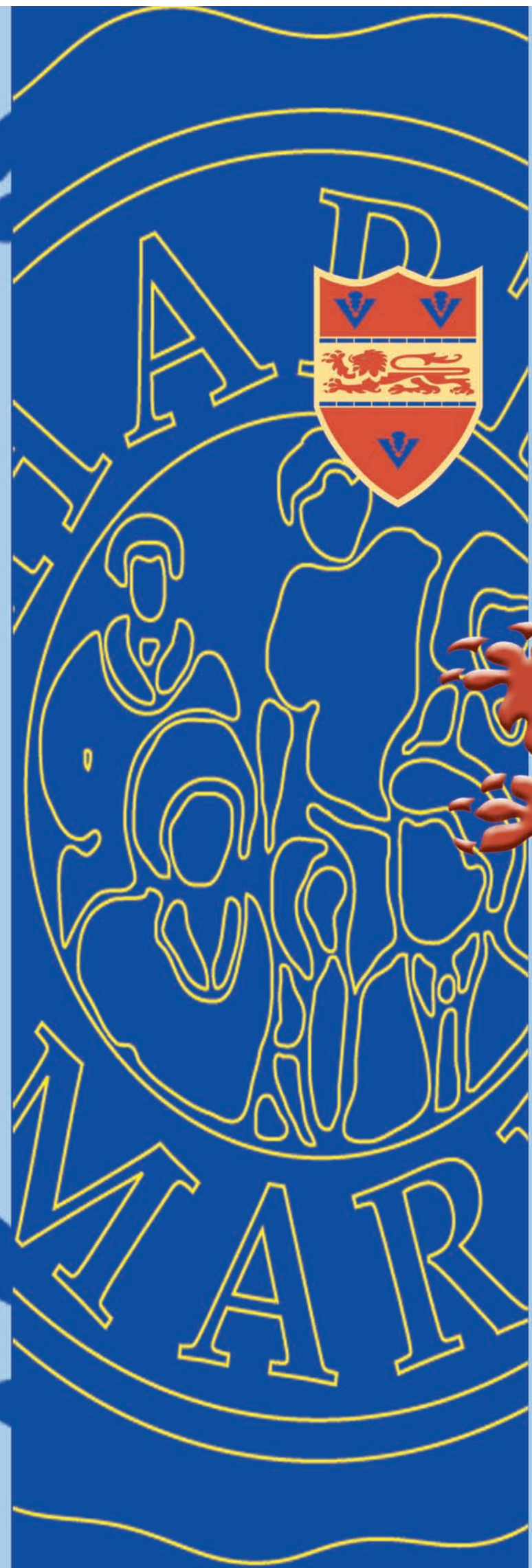
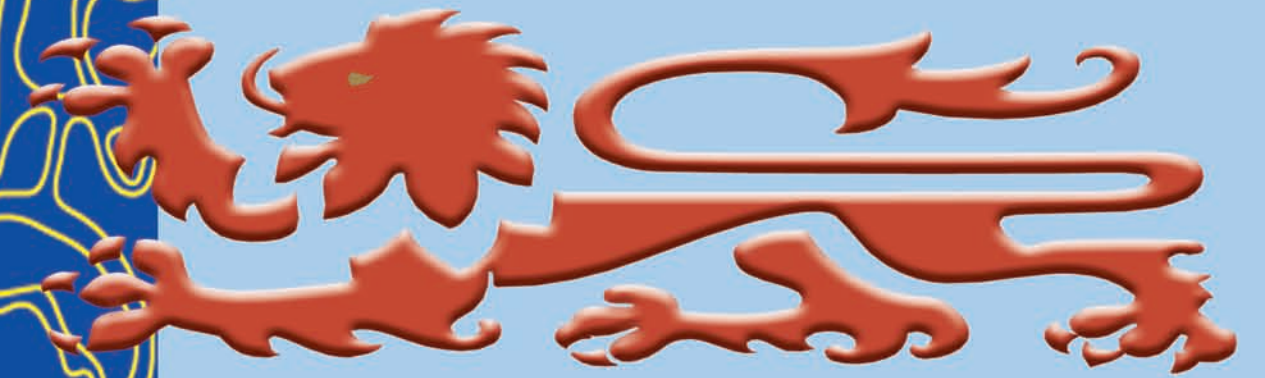


BENTON PARK TECHNOLOGY COLLEGE



BENTON PARK TECHNOLOGY COLLEGE



Networked Learning Communities

learning from each other learning with each other learning on behalf of each other



TECHNOLOGY COLLEGES



Awarded for excellence



Artsmark Gold



Investor in People



Specialist Schools Trust



Sport England Award



Investor in People



Beacon Schools



BENTON PARK TECHNOLOGY COLLEGE

Benton Park School Technology College provides a caring learning environment where diverse achievements are valued, and pupils are prepared for lifelong learning in a technological society. The school's aims and objectives support the 5 tenets of the Children's Act 2004 i.e.

- Be healthy
- Stay safe
- Enjoy and achieve
- Make a positive contribution
- Achieve economic well-being

Aims

Benton Park School Technology College aims to:

- Provide the learning opportunities that lead to continuous improvement in achievement.
- Provide exciting and innovative learning opportunities for all, regardless of race, gender, ability, or disability.
- Provide a wide range of learning opportunities through a broad, balanced and relevant curriculum, with emphasis on the positive role that technology and media play in shaping our world.
- Provide learning opportunities that meet the needs of people today for life in the world of tomorrow.
- Provide a safe, welcoming learning environment where every individual feels valued, and where achievement and effort are celebrated.
- Provide opportunities to promote the 'pupil voice' to inform decision making.
- Provide a networked learning community in partnership with stakeholders to promote life-long learning.
- Promote healthy and sustainable lifestyles.

Objectives

Benton Park School Technology College will:

- Develop as a caring, well-ordered community, based around LEARNING AND RESPECT.
- Develop as a centre for excellence in teaching and learning.
- Develop as a specialist Technology College.
- Develop an appropriate and coherent curriculum that ensures progression for all.
- Develop as an innovative centre for learning, including the use of new applications of Information and Communications Technology.
- Develop closer links with feeder Primary Schools, Secondary Schools, Special Schools and Further and Higher Education Institutions.
- Develop international links.
- Develop stronger links with the wider community and encourage access to learning for all.



LINKS BETWEEN SCHOOL & PARENTS

➤➤➤ School Uniform

The school is very proud of its uniform and insists upon smart appearance at all times. When pupils are in the wider community they are representatives of the school and, therefore, have an important role to fulfil. The school's Governing Body reviewed the uniform in 2006.

➤➤➤ School Transport

Many of our pupils from the Calverley, Rodley and Bradford areas travel to school on buses provided by First Bus/West Yorkshire. The school bus park is supervised in the evening by members of staff.

➤➤ Benton Park is delighted with the additional buildings financed by Education Leeds. As well as seeing the end of the temporary classrooms, this has given the school a new purpose built sports hall, increased specialist science and ICT facilities and provided additional classrooms.

Through 'Technology College Status' we have been able to refurbish our technology facilities. We have added computer aided design rooms for resistant materials and textiles and a commercial food production base for food technology.

We have added an extension to the Sixth Form block. This has increased accommodation and enhanced study and ICT facilities.

Most recently we have added a new Performing Arts block which has provided 'state of the art' facilities for music and drama.

We have expanded our accommodation to promote our inclusive practices. We have also added a Student Support Centre.



Benton Park School • Harrogate Road • Rawdon • Leeds • LS19 6LX

Telephone 0113 250 2330 • Fax 0113 250 9177

www.bentonpark.org.uk • E-mail secretary@bentonpark.leeds.sch.uk



LINKS BETWEEN SCHOOL & PARENTS

▶▶▶ Parents

Parental support is greatly valued. The school liaises with parents through the 'Pupil Planner', newsletters, regular Parents' Evenings, the school website and school reports. Parents are encouraged to contact the school with any concerns.

There is a thriving Parent Teacher Association, which meets on a regular basis and holds a variety of social events throughout the year to raise funds for the school.

▶▶▶ The School Day

8.30	ENTRY BELL
8.35	Registration/Tutorial/Assembly
8.45	Period 1
9.45	Period 2
10.45	BREAK
11.00	Period 3
12.00	Period 4
1.05	LUNCH
1.42	ENTRY BELL
1.45	Registration and Period 5
2.45	END OF SCHOOL

▶▶ School Meals

The school has a cafeteria service where pupils can purchase a hot meal. There is also a salad bar and a variety of snacks and sandwiches. Pupils wishing to bring a packed lunch may do so.

▶▶ Charging and Remissions

Under the Education Reform Act 1988, the school cannot charge for education which takes place during the school day, which is part of the curriculum, and where no alternative activity is offered.

There are occasions when charges may be made e.g. an educational visit, which is an enhancement to the curriculum, or for ingredients when the pupils are taking the finished products home. A copy of the Governors' 'Charging and Remissions Policy' is available at the school and on the school web site.



BENTON PARK TECHNOLOGY COLLEGE

Dear Parents and Carers

We at Benton Park feel fortunate to work in such a wonderful school. Over the years the school has collected a plethora of 'badges' to celebrate good practice in a number of areas. Namely, in chronological order:

INVESTOR IN PEOPLE was awarded to acknowledge the way in which the school looks after its staff - both teaching and non-teaching - and supports their professional development. This is why Benton Park is able to attract such high calibre staff to teach your sons and daughters. As a PARTNERSHIP PROMOTION SCHOOL we work closely with our local universities to help provide high quality teacher training opportunities.

CHARTER MARK is awarded by the Cabinet Office to public organizations which meet demanding criteria for public service. There are only two schools in Leeds with Charter Mark. We have been awarded this sought after accreditation three times.

BEACON STATUS was granted to us following our excellent OFSTED report in 1998.

SPORTSMARK acknowledges the excellent reputation that the school has for sport. This is not only for the lessons that are delivered in school, but also for the wide range of extra-curricular activities that the department is able to offer. The school boasts success at local, regional, national and international level in a range of sports.

TECHNOLOGY COLLEGE STATUS is awarded by the Specialist Schools and Academies Trust and supports the excellent practice which takes place in the four curriculum areas covered by the status - technology, mathematics, science and ICT.

NETWORKED LEARNING COMMUNITY is given to schools who work in collaboration with other schools to spread good practice, mainly in teaching and learning. We have always been praised by OFSTED for our very good classroom practice and we want to ensure that we maintain

these high standards by working with others and sharing ideas.

INCLUSION CHARTERMARK. Benton Park is extremely proud to be labelled an inclusive school. Staff, led by our Senior Assistant Head (Inclusion), work tirelessly to ensure that all pupils, whatever their ability, have a fair chance to succeed. We have a strong partnership with Green Meadows Special School, and a cohort of pupils on roll at Green Meadows attend Benton Park, spending 50% of their time in mainstream lessons. I was fortunate enough to be Executive Head of Green Meadows for over a year, so this partnership is very dear to my heart.

ARTSMARK GOLD awarded to schools who not only excel in art, music, drama and dance, but also show a commitment to the arts throughout the curriculum. You only have to walk around Benton Park to see quality art work in evidence.

We are also developing International Links so that Benton Park's excellent reputation can spread even further afield. The modern languages department has run trips to France, Spain and Germany. We also have links with schools in Africa, the United States, Brazil and Hong Kong.

I trust you can see that Benton Park offers a quality education in so many areas. Our Deputy Head (Community) won the prestigious Guardian 'Teaching Award' for his work with the community. The transition process for new Year 7 pupils, which he has developed over the years, has been highly praised by OFSTED.

We are always happy to show you around the school at any time and to meet your sons and daughters. Please do not hesitate to call and make an appointment.

Anne Clarke

Principal

A.M. Clarke



SCHOOL ORGANISATION

Staffing

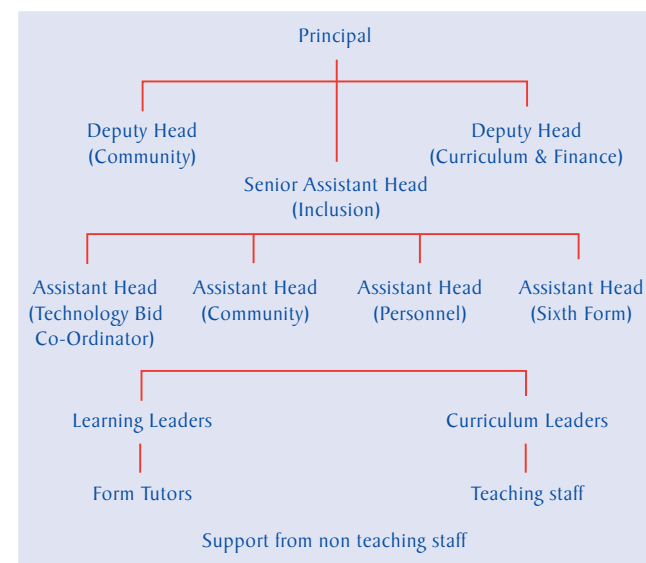
Benton Park is fortunate in having a well qualified and dedicated teaching staff, who give up unstintingly of their time to provide the best possible education for all our pupils. We also have a large team of non-teaching staff, who support the many activities which take place within the school to provide the pupils with additional opportunities.

Admissions

Benton Park is a Local Education Authority maintained school, so its admissions are controlled by the inclusive Education Leeds Policy. This includes children with disabilities. Details are available from the Leeds Pupil Admissions Department (Tel: 0113 247 5729).

Parents can be assured that everything possible is done to ensure a smooth transfer from primary to secondary school. Mr Hoban, Deputy Head (Community), visits all our local primaries on a regular basis to meet with the pupils and answer any questions about the transfer to Benton Park. Any fears are allayed, so that pupils can settle into school in September very easily.

School Organisation



Pastoral Care

Pupils are placed in tutor groups with a form tutor to look after them. Any problems that occur will be referred to the Learning Leader and ultimately to the Assistant Deputy Head (Community). This system is in place to ensure that every child is known and cared for. In addition, pupils who will benefit are offered a mentor to help them during their crucial exam preparation in Year 11 and at various other times in Years 7 to 10.

The school is also fortunate in having a Health and Attendance Officer, who is able to provide first aid and care for any pupils who become ill during the school day, and will contact parents if there is a concern about absence from school.

Student Support Centre

Launched in September 2006, the Student Support Centre (SSC) is situated in the newly refurbished M block. The SSC will incorporate the development of existing support services within Benton Park, such as the Learning Mentor Base and the introduction of new initiatives.

The SSC will provide a variety of student services both during and after school hours. Staff within the SSC, together with outside agencies, will endeavour to provide support that addresses both academic and emotional or behavioural difficulties.

The SSC will create a focal point for Extended Schools activities, forging links with local community organisations and strengthening existing partnerships with other local schools.



POST - 16 PROVISION

The Sixth Form

We have a large traditional Sixth Form with an outstanding academic record. We aim to provide students with the opportunity to achieve excellence within a caring and friendly environment.

Ofsted praised the Sixth Form, saying it was a credit to the school. Post-16 teaching and learning, careers advice and pastoral care were all graded as 'very good'. Past students have gone on to some fantastic university courses and exciting careers. We currently offer 28 Advanced level subjects including a number that are more vocationally based. A GCSE re-sit course is also available, subject to demand. Students in all areas achieve impressive results with recent Advanced level pass rates well exceeding 90% and even more importantly a high level of value added. This perhaps explains why over 80% of Upper Sixth students go to higher education, including a number who gain places at Oxford and Cambridge. We are, however, equally proud of those who successfully find employment in a range of exciting areas.

The Sixth Form is a community where every individual is valued equally and where staff and students work together in an atmosphere of mutual trust to achieve their goals.

The Sixth Form Team and Sixth Form Council are fully committed to providing experiences that will enrich, challenge and develop the individual, preparing them for a fulfilling future. Student voice is a priority and the Council is consulted on many key decisions.

While we are justifiably proud of our students' examination results, we believe that Sixth Form life is about more than just academic success. We encourage students to fully participate in a varied range of activities, some aimed at helping the wider community. Such community links allow students to develop a wide range of valuable skills and gain great personal satisfaction. They also form a bridge between school and the world of work. We hope to offer something



for everyone. Aside from the superb opportunities in sport, drama and music, the Sixth Form are active in Young Enterprise, and have sent a delegation to the national finals of the European Youth Parliament. They have even found time to take part in inter-form Ready Steady Cook and football competitions!

Pastoral care in the Sixth Form is a priority and we were also commended by Ofsted for our efforts in this area. The pastoral team closely monitor the students' welfare and progress, and there is the work of form tutors to give day-to-day support.

The Sixth Formers, who are excellent ambassadors for the school, are relied upon to assist staff at important school functions, and to take a leading role in school life. Many provide regular classroom assistance in lower school lessons and serve as mentors to Year 8 pupils. Their initiative and energy is highly valued and a source of much school pride.



CURRICULUM

➤➤➤ Religious and Philosophical Education

Religious and Philosophical education is part of the school's curriculum and the syllabus followed is that agreed by the Leeds Standing Advisory Council for RE (SACRE). As far as accommodation and resources permit, all pupils are involved regularly in a school assembly.

➤➤➤ Extra-Curricular Activities

The school has an extensive extra-curricular activities programme.

The Music department encourages an involvement in music of all types – classical, jazz and pop. The school concerts include this wide range of music. The school Samba band has a national reputation and has performed at the Royal Albert Hall.

Sport is a real highlight at Benton Park. Pupils are given every opportunity to compete in the sport of their choice, at the highest possible level. There are extra-curricular activities in netball, hockey, rugby, football, cricket, athletics, swimming, cross country, basketball, gymnastics, rounders, tennis, cycling, dance and so on. The school boasts city, county, national and international champions.

The PE department has the prestigious Sportsmark award.

The Drama department is active in involving the pupils in a variety of workshops and productions, both within school and at local theatres.

The Art, Design and Photography department works closely with music and drama to provide a number of extra-curricular activities for pupils. The school was awarded Artsmark Gold, acknowledging the work that takes place within these departments and across the school as a whole.



Students participate in the Maths Challenge, the English Speaking Board competition and the Youth Parliament debate. Departments also offer an extensive programme of visits.

Involvement in these activities provides a different dimension to pupils' education.



SCHOOL ORGANISATION

➤➤➤ School Complaints Procedure

Parents who have a complaint about the school should in the first instance telephone the school and ask to speak to a member of the Senior Management Team who will direct the complaint to the relevant person.

A formal complaint form is available from the school on request if the complainant wishes to record their concern in written form.

The complaint will be noted and will be fully investigated and discussed.

The complainant will receive a letter, interview or telephone call describing the action the school has taken within three working days.

If the complaint is not dealt with to the satisfaction of the parent/carer or member of the public then a formal letter of complaint should be sent to the Chair of Governors c/o Benton Park School, Harrogate Road, Rawdon, LS19 6LX.

Should the complainant still believe their concern has not been satisfactorily addressed, they should write to The Director of Education, Merrion House, LS2 8DR.



Awarded for excellence



CURRICULUM

▶▶▶ Classes and Subjects

On entry to the school the year group is divided into two half-year groups of equal ability known as bands. The curriculum for each band is identical except for the modern foreign language they study. One band studies French, the other German. Within each band there are four teaching sets grouped together on the basis of their KS2 results. For science there are five teaching sets based on KS2 results and in technology and information technology (IT) there are six mixed ability sets.

The four general teaching sets, apart from the chosen modern foreign language, study English, mathematics, art, drama, geography, history, music, PE, religious studies and philosophy (RSP) and personal, social, careers and health education (PSCHE). In Year 8 the curriculum remains the same but separate sets for mathematics and English are created based on ability within the respective subjects. Movement between sets in the general teaching subjects occurs based on progress in Year 7. In Year 9 an extra set is created in each band for the key subjects of English and mathematics and the top two teaching sets in each band study German as a second modern foreign language.

In Year 10 all pupils study full course GCSEs in English, mathematics, science double award or biology, chemistry and physics and a short GCSE course in religious studies. All pupils also study a GCSE in technology from a wide range of subjects including electronics, food, printing and publishing, resistant materials, systems and control and textiles.

The students can also choose three other subjects from those studied at KS3 as well as the following additional GCSE subjects: business studies, economics, health and social care, media studies, media production, music technology, photography, and physical education. The

number of vocational courses on offer has increased to meet the needs of our youngsters.

As well as the aforementioned, there is the opportunity for students to study GCSE Latin and GNVQ courses in ICT after the end of the normal school day.

▶▶ Own Learning

We try to encourage pupils to take responsibility for the work they do at home – own learning. All pupils have a pupil planner so they can record their work on a daily basis, and parents are able to see what has been set. Work at home can take various forms, it may be written work, it may be learning, or even research via the internet. We want to impress upon our pupils that learning takes place beyond the confinements of the school day.

▶▶ Equal Opportunities

All pupils regardless of gender, race, ability and physical needs are valued and given equal access to the curriculum. The school is accessible to wheelchair users, as required under the Disability Discrimination Act 1995.



CURRICULUM

▶▶▶ Inclusion and Special Educational Needs (ISEN)

The Inclusion Chartermark, awarded to Benton Park in 2006 by Education Leeds, is in recognition of the school's excellent inclusive practice. It also recognises the partnership between Green Meadows Special School and Benton Park. We have a thriving community of partnership pupils in KS3 and KS4 bases known as Meadows Park.

Benton Park is fully accessible to pupils with disabilities and the school makes every effort to ensure that accessibility is a feature of school plans and policies.

The Senior Assistant Headteacher (Inclusion) has responsibility for implementing the Governing Body's ISEN policy and the DfES's SEN Code of Practice. In this way all pupils are monitored very carefully in terms of their physical, academic, behavioural and emotional wellbeing to ensure that all needs are identified, assessed and provided for.

The school has a large team of Learning Assistants who provide additional support within the classroom for pupils who have been identified as having special needs. The Student Support Centre extends support provision for all pupils within school.

The Governing Body updates the ISEN policy regularly to ensure it meets statutory requirements.

▶▶▶ Personal, Social, and Careers Education (PSCHE) (including sex education)

All pupils follow a comprehensive PSCHE programme. A wide variety of topics are covered to encourage pupils to discuss the wide social, moral and political issues of the day. Hopefully this will allow pupils to leave Benton Park

as well informed young people ready to face the challenges and decisions of adult life. The school has excellent links with Leeds Careers Service and in years 10 and 11, particular emphasis is placed on Careers Education and Guidance. During year 10 all pupils spend two weeks on a Work Placement in the 'real world'.

▶▶ Citizenship Education

Citizenship education gives pupils opportunities to gain the knowledge, skills and understanding to play an effective role in society at local, national and international levels. It helps them to become informed, thoughtful and responsible citizens who are aware of their duties and rights. The topics covered encourage pupils to play an active part in the life of their school, neighbourhood, community and the wider world. Hopefully the opportunities we provide at Benton Park will help pupils grow into confident and responsible members of society.

▶▶ Enterprise Education

Pupils at Benton Park are offered a range of opportunities to develop knowledge, skills and attitudes that encourage a 'can do, think for yourself' approach to their personal and working life. Enterprise education consists of enterprise capability supported by better financial capability and business and economic understanding in order for pupils to make informed choices.

